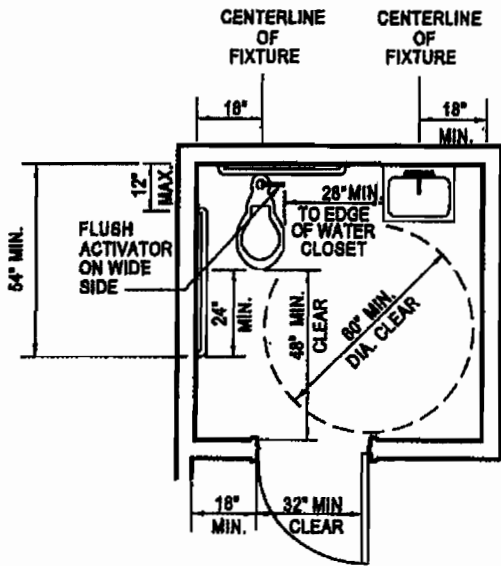


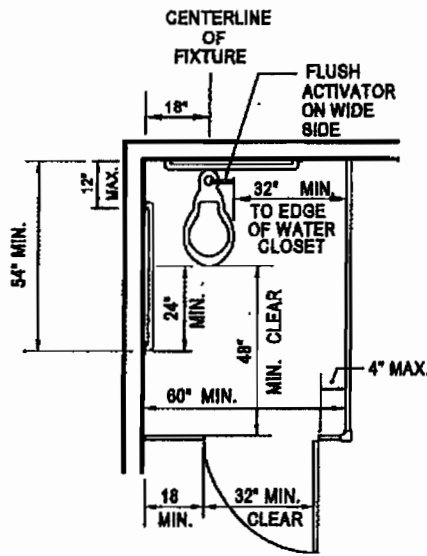


ACCESSIBLE TOILET FACILITIES

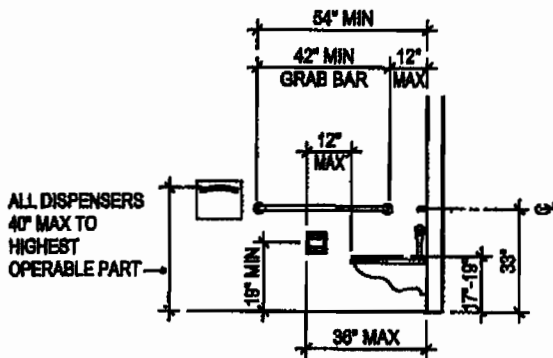
The following diagrams are from the 2007 California Building Code Chapter 11



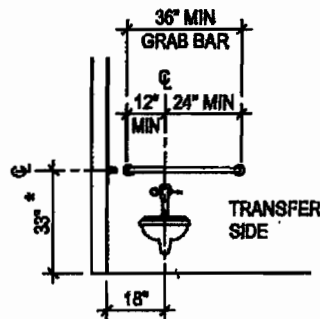
**SINGLE-ACCOMMODATION
TOILET FACILITY**



**ACCESSIBLE WATER CLOSET COMPARTMENT
WITHIN A MULTIPLE-ACCOMMODATION TOILET FACILITY**

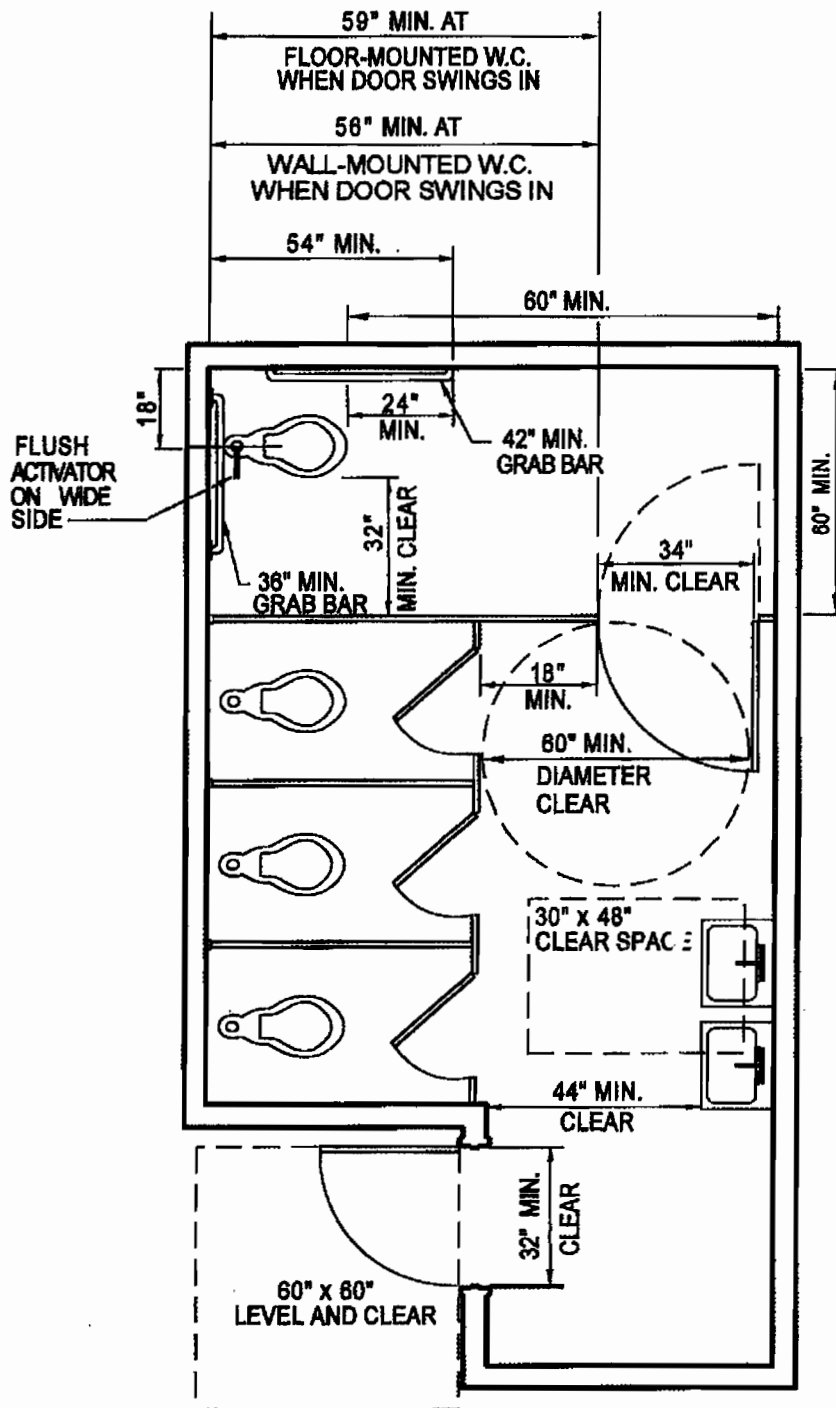


SIDE WALL ELEVATION



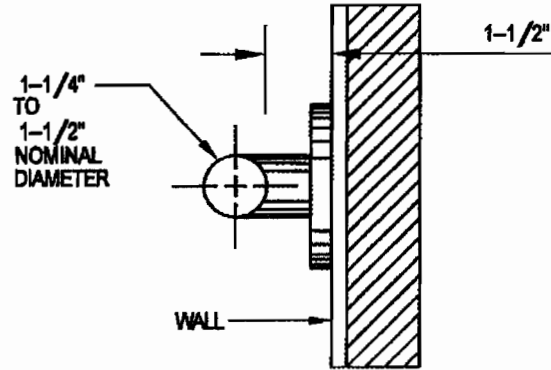
* REAR GRAB BAR
ALLOWED AT 36" A.F.F.
AT TANK-TYPE TOILET

REAR WALL ELEVATION



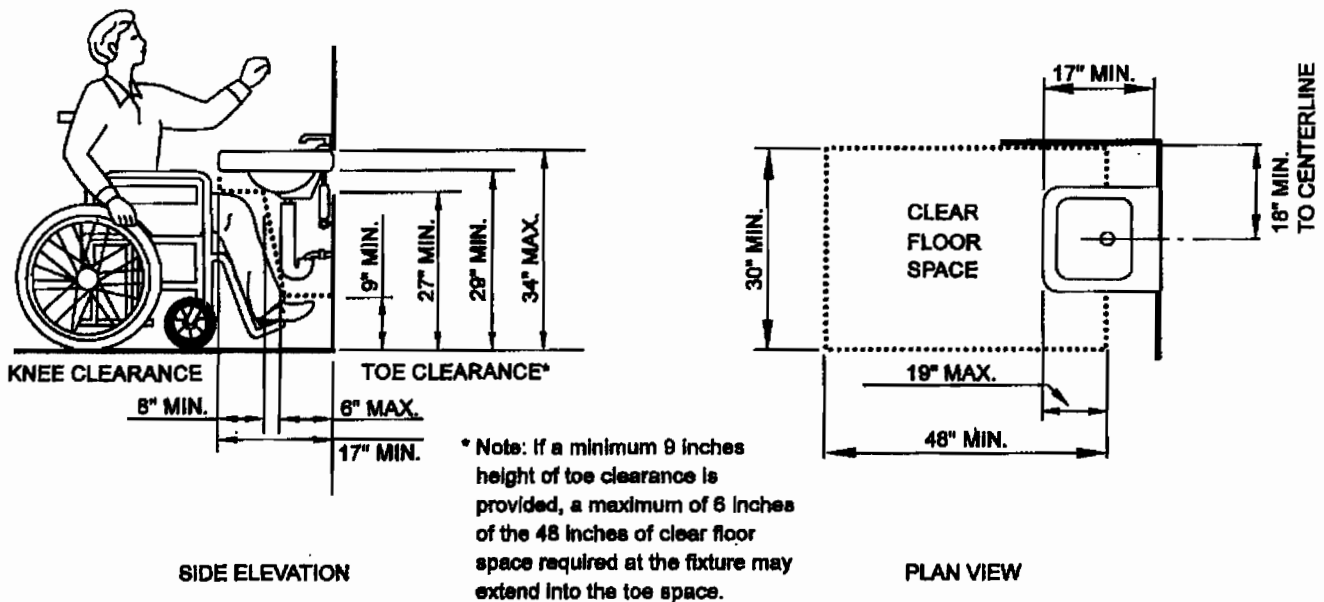
THIS DIAGRAM ILLUSTRATES THE SPECIFIC REQUIREMENTS OF THESE REGULATIONS AND IS INTENDED ONLY AS AN AID FOR BUILDING DESIGN AND CONSTRUCTION

FIGURE 11B-1B—MULTIPLE-ACCOMMODATION TOILET FACILITY



THIS DIAGRAM ILLUSTRATES THE SPECIFIC REQUIREMENTS OF THESE REGULATIONS AND IS INTENDED ONLY AS AN AID FOR BUILDING DESIGN AND CONSTRUCTION

FIGURE 11B-1C—TYPICAL GRAB BAR SECTION



THESE DIAGRAMS ILLUSTRATE THE SPECIFIC REQUIREMENTS OF THESE REGULATIONS AND ARE INTENDED ONLY AS AN AID FOR BUILDING DESIGN AND CONSTRUCTION.

FIGURE 11B-1D—KNEE CLEARANCE