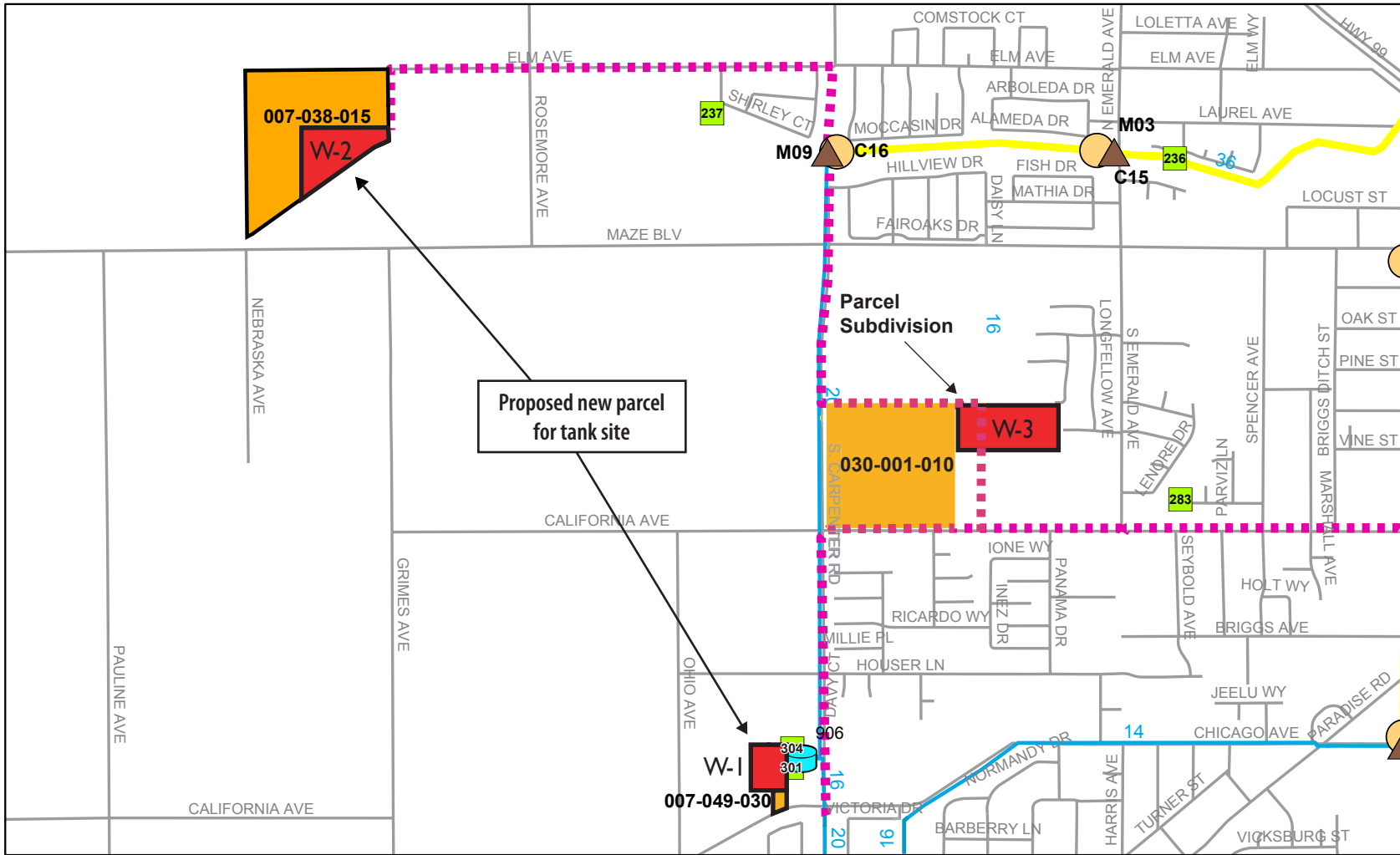


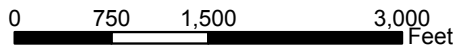
03564.03 EIR (11/04)



Legend

- Potential Storage Tank Site
- Existing Storage Tanks
- Existing Meters
- Existing Production Wells
- Existing Connections
- MID Pipeline

- Existing Pipelines >= 14"
- Roads
- Potential Storage Tank Parcel



**MRWTP Phase Two
Expansion Project
(February 27, 2004)**

